

Rheumatoid Arthritis (RA)

RA is an autoimmune and inflammatory disease in which the immune system attacks healthy cells, causing inflammation and painful swelling in the affected parts of the body.¹

TREATMENT

Management of RA includes a combination of clinician exams, laboratory work, and various combinations of medications that help slow disease progression and prevent joint deformity. This management approach plays a vital role in determining disease severity and achieving low disease activity or near remission with few or no RA symptoms, which is the goal of therapy.¹

SHIELDS 2023 RA OUTCOMES



61%

of RA patients IMPROVED their RAPID3 score, resulting in positive treatment outcomes



96%

of patients reported their condition has improved or has been stable since onboarded with Shields



79%

of patients reported no missed days of planned activity, school, or work due to RA



RAPID3:

Measuring disease activity and patient response enables healthcare teams to evaluate the success of RA treatments and identify needed changes. These scores support a collaborative effort among the patient care team, facilitating shared decisions to improve patient health outcomes.



DISEASE CONTROL:

Tools like RAPID3, supplemented by patient-reported outcomes (PROs), provide valuable insights into disease management from patients' perspectives. This contributes to a holistic understanding of patient experiences, ensuring optimum patient care and enhancing patient outcomes.



ABSENTEEISM:

Comprehensive care requires a thorough understanding of disease management. Absenteeism measurement is a vital component, providing insights into disease burden and quality of life effects, leading to enhanced care, improved quality of life, and reduced costs.

3 Common Barriers to the Treatment & Management of Rheumatoid Arthritis

1

Lack of financial resources

2

Lack understanding of disease progression

3

Medication adherence

Rheumatoid Arthritis

Our proven Shields model breaks down barriers to care to optimize patient outcomes.

Shields Health Solutions' dedicated team of clinical pharmacists, liaisons and patient support advocates engage patients and their families to help educate, coordinate care and ensure patients receive specialty medication without significant delays.

ENGAGE

Our clinical team engages with patients at the clinic and through telehealth appointments.

INTERVENE

Clinical pharmacists intervene to improve the patient's care plan when drug interactions, related side effects, barriers to adherence or other challenges are identified.

COORDINATE

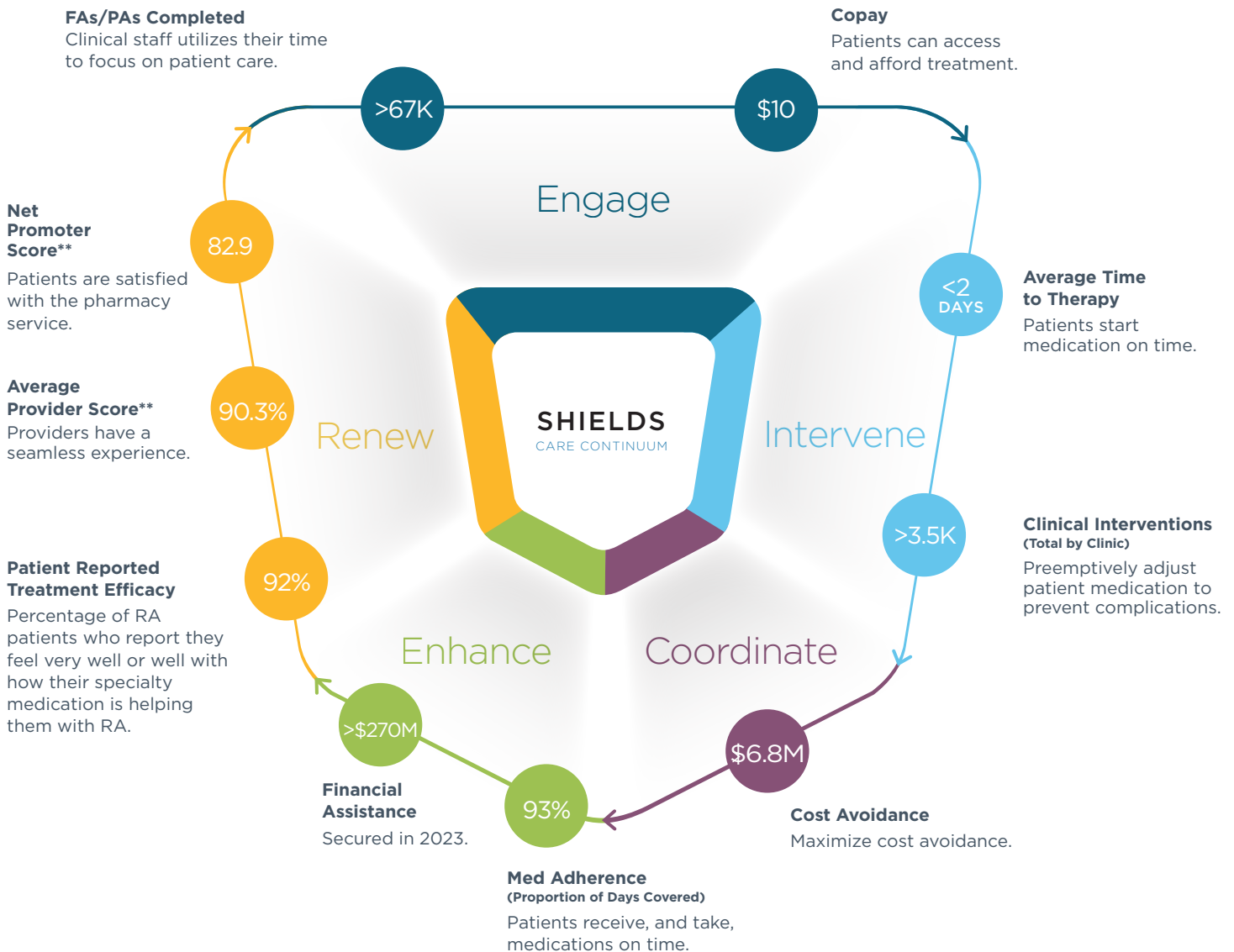
Liaisons investigate patient benefits, complete prior authorizations and identify financial assistance, minimizing barriers to optimal therapy.

ENHANCE

Through clinical pharmacist interventions, we can enhance patient care by providing support, education, and optimizing therapy when challenges arise and treatment goals are not met.

RENEW

Ongoing interactions beyond refills; proactively identify opportunities to improve patient care and outcomes at each touchpoint.



1 Rheumatoid Arthritis (RA) | Arthritis | CDC Accessed 1/14/24
 2 <https://www.healthline.com/health/rheumatoid-arthritis/facts-statistics-infographic#Prevalence>

*All metrics are reflective of data collected in 2023.

*Shields Health Solutions Network includes data from a collective of member health systems that partner with Shields to elevate an integrated specialty pharmacy model.

**Scores have been combined from both spring and fall 2023 survey results.