

# Pharmacist Driven Program for Evaluation of Pneumococcal Vaccination Among Adult Patients with Cystic Fibrosis

Christine Bielick Kotkowski, MD<sup>1</sup>; Jennifer Kodela, DO<sup>1</sup>; Elin Kientz-Bell, NP<sup>1</sup>; Jaclyn Longtine, BA, CCRC<sup>1</sup>; Amanda Eaton, RN, MS, CCRC<sup>1</sup>; Stella Lebel, PharmD, BCPS, CSP<sup>1,2</sup>



SCAN ME

1. UMass Memorial Medical Center  
2. Shields Health Solutions

## BACKGROUND

Centers for Disease Control and Prevention (CDC) 2023 guidelines recommend administration of the most recently available pneumococcal vaccine (PCV20) to adult patients with cystic fibrosis (PwCF). However, a baseline assessment of the adult PwCF clinic in a multidisciplinary clinic at a large academic medical center demonstrated opportunities for improvement in PCV20 vaccination. As a result of these baseline data and the recent CDC guideline, a pharmacist-driven program was created for comprehensive evaluation of immunization histories and counseling on PCV20 recommendations for PwCF. The objective of this initiative was to ensure timely and appropriate administration of PCV20 for PwCF.

## METHODS

- At each clinic visit from December 2024 through January 2026, the pharmacist verified immunization histories and provided education to all adult PwCF on the importance of PCV20.
- If the patient and provider agreed, the pharmacist reached out to the provider to pend the order, and PCV20 was administered in clinic during the appointment. If patients were ill during the visit, vaccination was deferred to a future appointment.
- Program outcomes were captured between December 2024 and January 2026 and included receipt of the PCV20 vaccine, interest in receiving the vaccine in the future, or vaccine refusal.

## RESULTS

During the 13-month period, 64 adult PwCF were evaluated. Of the 64 patients, 8 (13%) received PCV20 previously, 38 (59%) received PCV20 during the visit or at a local pharmacy, 7 (10%) were sick at evaluation but expressed interest in receiving it at a future appointment, 3 (5%) expressed interest in immunization at a future visit, and 8 (13%) declined. No recommendations were declined by the provider.

Table 1: Patient Characteristics (N=64)

AGE (YEARS)	
20-29	24
30-39	19
40-49	13
50-59	5
60+	3
GENDER	
Female	21
Male	43
INSURANCE	
Commercial	40
Government	24

Figure 1: Decision algorithm for evaluating the need for immunization

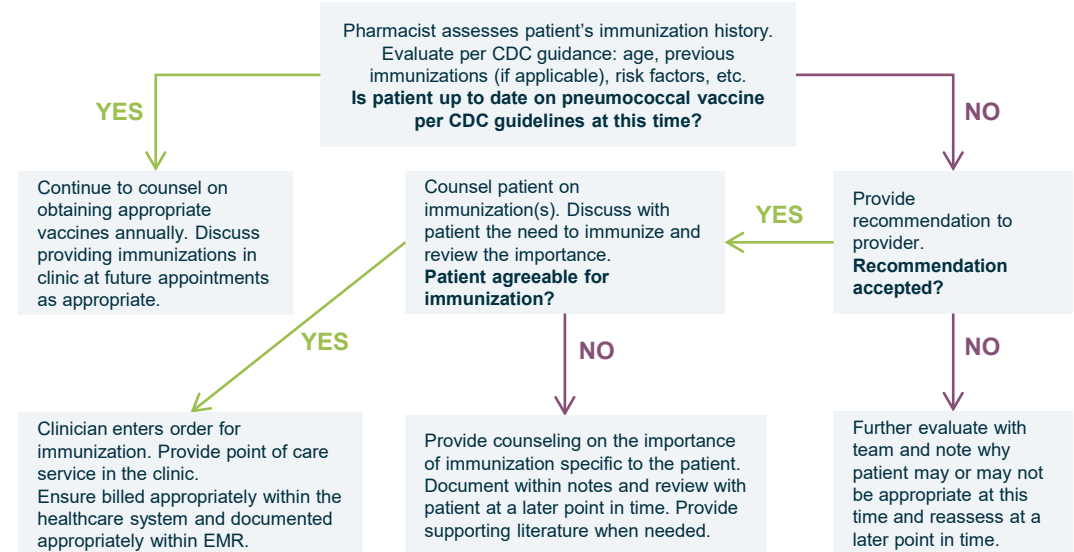
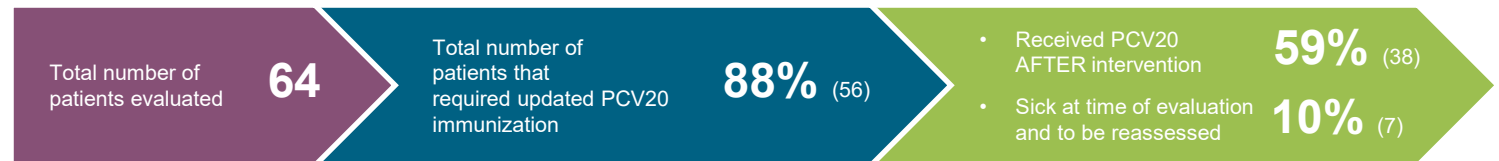


Figure 2: PCV Vaccine evaluation and intervention



## CONCLUSION

- This program identified several factors associated with low receipt of PCV20 in PwCF, including vaccine hesitancy, uncertain immunization history, and inconvenient timing of administration. Most patients evaluated were receptive to PCV20, underscoring the importance of focused in-clinic evaluations and counseling to ensure PwCF receive recommended vaccines. None of the pharmacist recommendations were declined by the provider, highlighting the important role of an integrated pharmacist in care of PwCF.
- Engaging with a pharmacist during clinic visits facilitates appropriate immunization and allows PwCF to understand the importance of these vaccines.

## REFERENCES

- Zbell JT, et al. Implementation of a comprehensive pharmacy-driven immunization care process model in pediatric cystic fibrosis clinic. *Pediatric Pulmonology*. 2023;58:1145-51. DOI: 10.1002/ppul.26306
- Girto JE, et al. Pharmacists as Partners in Pediatric Immunizations: A White Paper From the Pediatric Pharmacy Association. *J Pediatr Pharmacol Ther*. 2024; 29 (6):660-6. DOI: 10.5863/1551-6776-29.6.660
- Malfroot A, et al. Immunisation in the current management of cystic fibrosis patients. *Journal of Cystic Fibrosis*. 2005; 4: 77 - 87. doi:10.1016/j.jcf.2004.10.003
- US Centers for Disease Control and Prevention. Pneumococcal Vaccine Timing for Adults. [www.cdc.gov/pneumococcal/index.html](http://www.cdc.gov/pneumococcal/index.html); 2024 [accessed 16 December 2024]